

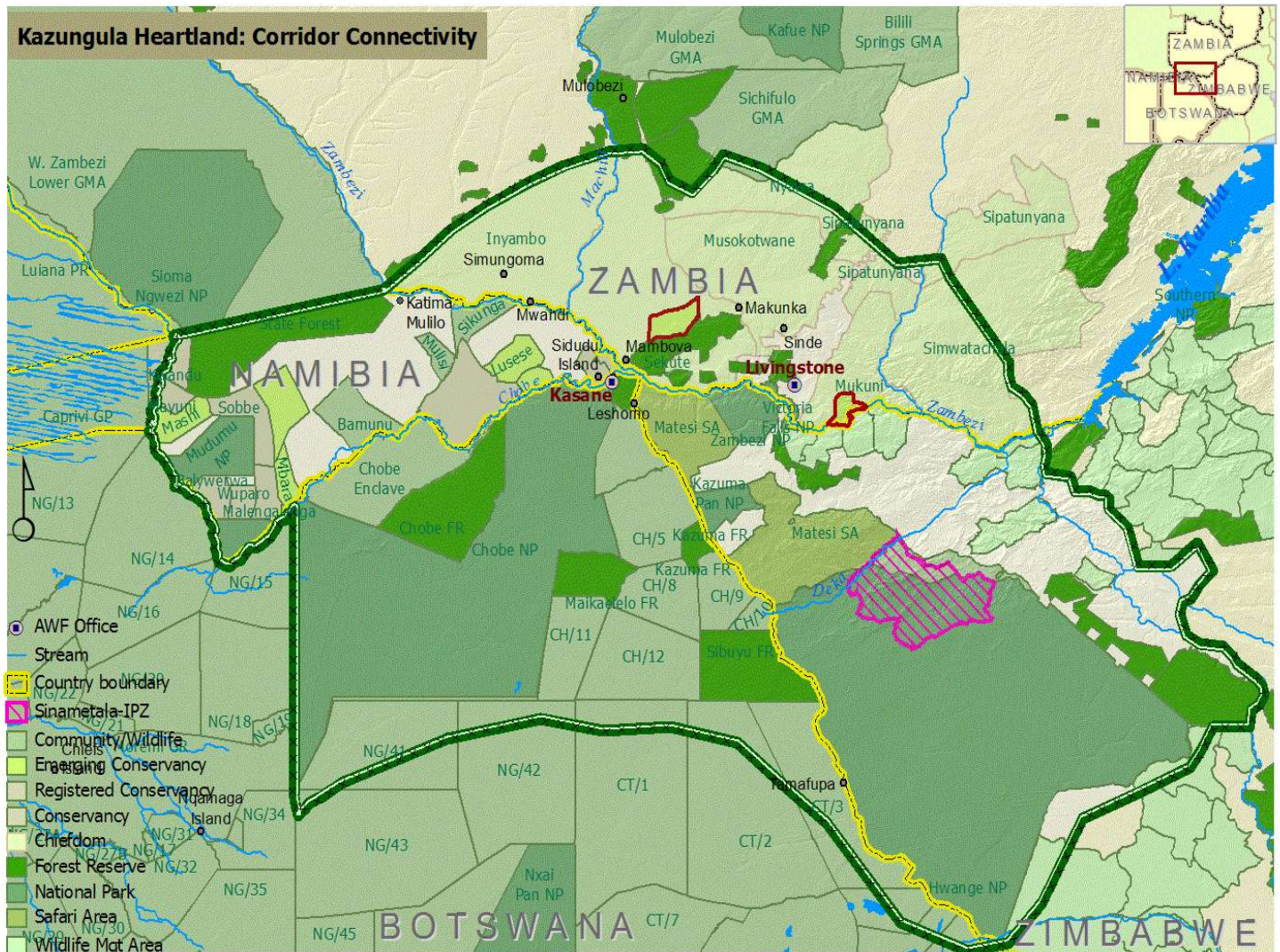
**SCAPES Annual Meeting**  
**Luray, Virginia**  
**Nov. 30 – Dec. 3, 2010**  
Luray, Virginia

# **AWF Kazungula Heartland and Social Sustainability**

Nyikavanhu Munodawafa  
African wildlife foundation



# Map of Kazungula Heartland



# Critical Threats to Conservation



- Habitat disturbance: encroachment of incompatible settlements;
- Habitat fragmentation: development along the Zambezi
- Commercial agriculture/ cultivation of natural areas;
- Poaching;
- Uneven distribution of elephants;
- Unsustainable wood harvesting for charcoal and construction

# SCAPES Conservation Actions

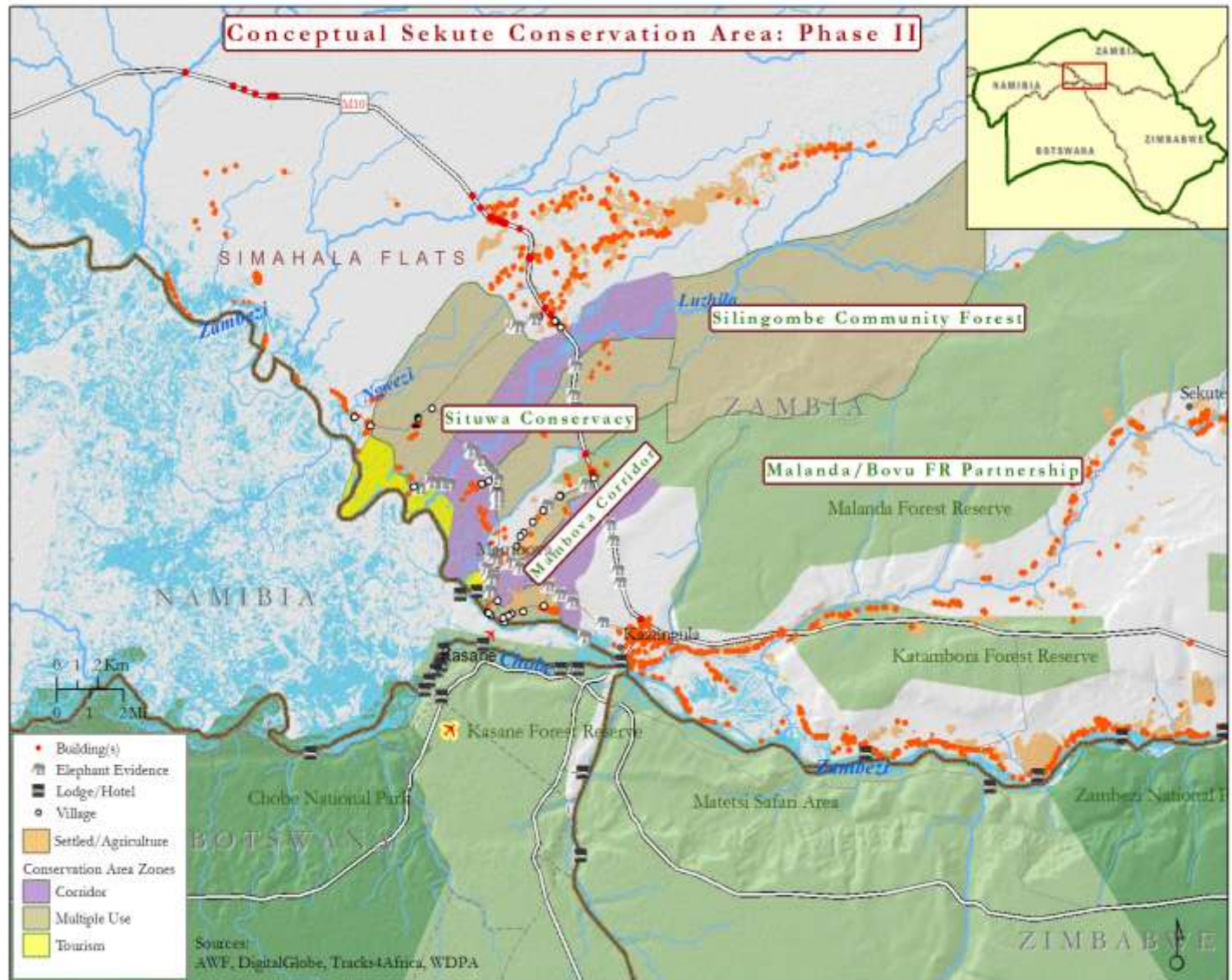
1. Develop Sekute conservation Area through:
  - securing wildlife corridors and community conservancy,
  - forest co-management ,
  - education development/easement and
  - economic development through tourism
2. Species conservation, large carnivores in Botswana, and Rhino in Zambia



3. Enterprise development, Machenje fishing camp and Licaba Island.
4. TBNRM, integrate AWF efforts into KAZA TFCA process



# Sekute Conservation Area



# SOCIAL SUSTAINABILITY.....

## Social factors /Issues

- Ownership
- Incentives



## Responses

- Land/Assets-under the community trust
- Enterprises, Office, Employment, Education,



# ..Social sustainability

- Human Wildlife Conflict
- Carnivore conflict applied research



- Accountability



- Scouts; Trust Administration, Education Easements/ scholarships; Tourism enterprises



# Challenges and lessons

- Benefits to community inadequate as Enterprises are still under development
- Policy on NRM not supportive of benefits reaching communities (Sharing of costs & Benefits)
- Household level benefits/ incentives (link conservation and development)





# Challenges /Lessons cont

- Participatory process of developing community institutions long but necessary to achieve sustainability;
- Matching community investment in conservation requires more incentives and direct benefits from conservation;



THANK YOU

